



# JForex

Quickstart Manual

v 14.12.2016 EN



# Table of Contents

1. Disclaimer .....	1
2. Welcome to JForex and the Quickstart Manual .....	2
2.1 What is JForex? .....	2
2.2 How to use this manual?.....	2
3. Starting JForex .....	3
3.1 Starting and Installation .....	3
3.2 Log-in .....	3
3.3 Login issues .....	5
4. The JForex Workspace.....	6
4.1 The Menu Bar .....	7
4.2 Trading Panel.....	7
4.3 Navigator.....	9
4.4 Status bar.....	9
4.5 Tabs.....	10
4.6 Charts .....	12
5. Placing and managing orders.....	14
5.1 Placing market orders.....	14
5.2 Placing conditional orders.....	15
5.3 Placing Bid and Ask Offers .....	16
5.4 Closing and partially closing positions .....	17
5.5 Adding SL/TP to an existing position or entry order .....	18
5.6 Modifying and cancelling orders .....	19
5.7 Merging positions.....	21
5.8 Adding a Trailing Stop .....	21
5.9 OCO (One-cancels the other) functionality.....	23
5.10 Historical orders .....	23
6. Using the Charts.....	24
6.1 Add a new chart or change the instrument in a chart .....	24
6.2 Arranging the charts .....	25
6.3 Navigating the Charts .....	25
6.4 Add indicators .....	26
6.5 Edit and remove indicators .....	27
6.6 Draw on the charts.....	27
6.7 Using templates .....	28
6.8 Changing the Chart theme.....	28
7. Strategies.....	29
7.1 Creating Strategies .....	29

7.2 Testing Strategies.....	29
7.3 Running Strategies .....	30
8. Reports .....	31
8.1 Portfolio Statement .....	31
8.2 Intraday Statement.....	31
8.3 Position Report .....	31
8.4 Activity Log .....	31
8.5 Rollovers .....	32
8.6 My Account.....	32
9. More Questions? .....	33
9.1 Support Chat.....	33
9.2 Phone.....	33
9.3 E-mail.....	33
9.4 Dukascopy Community .....	34



# 1. Disclaimer

The present manual aims to structure the presentation, description and explanation of the features of the platforms and trading instances in a consistent way. The manual is updated as regularly as possible to cope with the high pace of development of the trading instances.

Although the manual is updated as speedily as possible, users must be fully aware that the manual may not contain a description of all processes and features as the first evolve over time, and the latter are added, removed, or modified through the development process. By the same token, some descriptions, explanations and other notices may be outdated and not reflecting as a consequence, current processes and procedures.

Therefore, clients are strongly encouraged to explore the manual while testing the different features with a demo account. The trading environment, features and functioning of the platform as well as various surrounding issues must have been reviewed by the clients and prospects, all possible remaining questions should have been asked to and answered by Dukascopy before trading live and managing real equity.

Dukascopy is neither responsible nor liable for any damage including but not limited to trading losses or loss of profit deriving from the use, possible incompleteness, inaccuracies and obsolescence of the manual. The manual shall not be construed as a trading advice, an investment advice or a recommendation to execute or to not execute specific transactions on Dukascopy's platforms.

The present manual is not intended to cover any and all aspects of the business relationship between Dukascopy and its clients, prospects and/or other partners. For information about the frame in which Dukascopy operates with respect to the market and with respect to clients, prospects and other partners, the reader is encouraged to consult the Dukascopy website, and/or to contact Dukascopy's representatives.



## 2. Welcome to JForex and the Quickstart Manual

This quickstart manual provides an introduction into the main features and tools of JForex. You will be guided through the login process, made familiar with the workspace, get to know basic order and equity management tools.

### 2.1 What is JForex?

JForex is an online trading platform providing access to the Swiss Forex Marketplace (SWFX). The platform is designed for both manual and automated trading. Traders can develop and test automated strategies on a transparent historical price feed. The platform provides a wide array of trading orders as well as advanced tools for order management and technical analysis.

### 2.2 How to use this manual?

Follow the step-by-step descriptions to get to know the platform. The manual provides a brief introduction into the platform and is by far not exhaustive. If you have more specific questions, please do not hesitate to contact us.



*This symbol is used to point to helpful information, tricks and shortcuts that you should not miss.*

# 3. Starting JForex

## 3.1 Starting and Installation

There are different options to launch the JForex 3 trading platform. Depending on your preferences and setup, you can start JForex 3 directly through our website or install it on your computer. Both versions offer the same trading functionality, the main differences concern the starting and installation process.

### Web version (JForex 3 Demo or JForex 3 Live button)

- No installation needed
- Can be launched directly from the web
- Requires Java
- Operating system independent

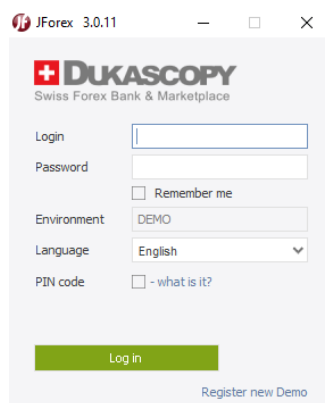
### Installation version (Install JForex)

- No Java required
- Needs to be installed
- Available for Windows, Mac and Linux

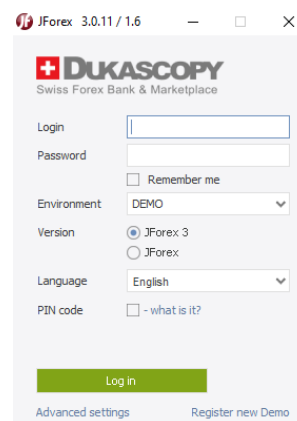
You find the direct links to the web and installation versions on the [login page](#). Please note that there are different links for the demo and live platforms.

## 3.2 Log-in

### DEMO

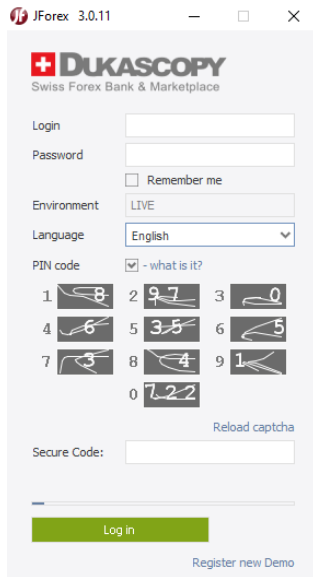


*Demo web start*

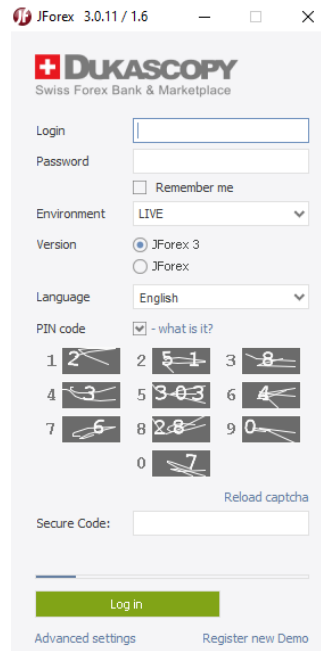


*Demo install version*

Type in your login and password in the required fields. A PIN code is not provided and also not necessary for demo accounts. If you use the installation version, make sure that the **Environment** is set to **DEMO**.

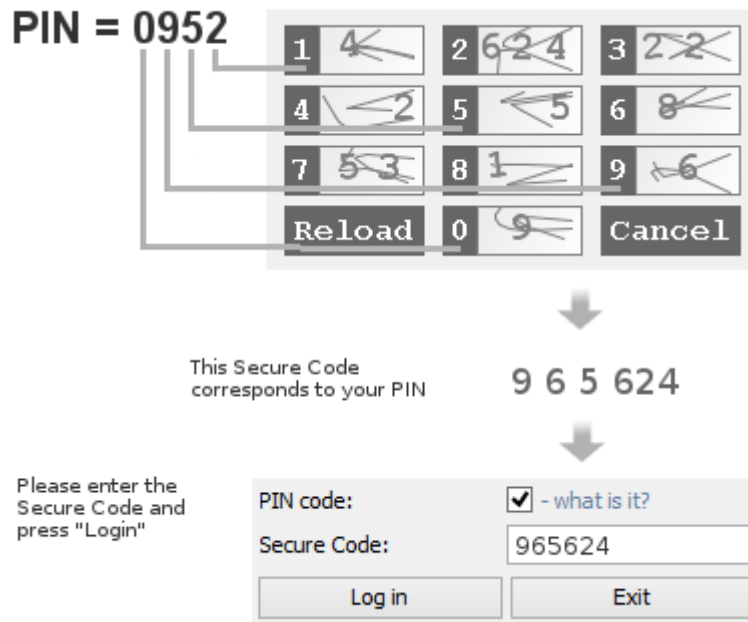


Live web start



Live install version

Type in your login and password in the required fields. If you use the installation version, make sure that the **Environment** is set to **LIVE**. Tick the **PIN code** box if it is not ticked already.



PIN code example

Live accounts use the PIN code for additional security. Upon account opening, you receive an e-mail with your login credentials and a temporary password. Once this temporary password has been changed, a PIN code is sent via SMS to the registered mobile phone number for the account. If you did not receive the PIN code, please contact live support.

Please note that you do not type in the numbers of your PIN code. Instead, you use it to construct a so called 'secure code'. In the authentication window, you see a table of numbered boxes. The digits in the wider, whitish boxes (which are also harder to read) are randomly generated and change every time you login or reload the window. If your PIN code starts with '0', locate the box with the '0' on the left side (the grey box) and type in the digit(s) from the wider, white box. In this example, this would be '9'. Type '9' in the **Secure Code** field. If there are several digits, type in all of them in the secure code field. In this example, for the digit '2' of your PIN code, you would need to type in '624' in the secure code field. No space between the digits is required.

The digits are valid for only 5 minutes (the current time remaining until expiration of their validity is displayed above the table). If you fail to enter the necessary combination of numbers within 5 minutes, click the **Reload** button.

### 3.3 Login issues

If you receive the following error message *Authentication failed. (801)*, you did not enter your login credentials correctly. In that case, please consider the following and retype your login credentials:

- Logins and passwords are case sensitive
- Make sure that you use the correct environment (DEMO/LIVE)
- Check if CAPS LOCK is turned on
- Check the keyboard language settings
- Demo platforms do not require a PIN code

If this does not solve the issue, LIVE clients can send a request from their registered e-mail address to our live support to reset the password and PIN code.

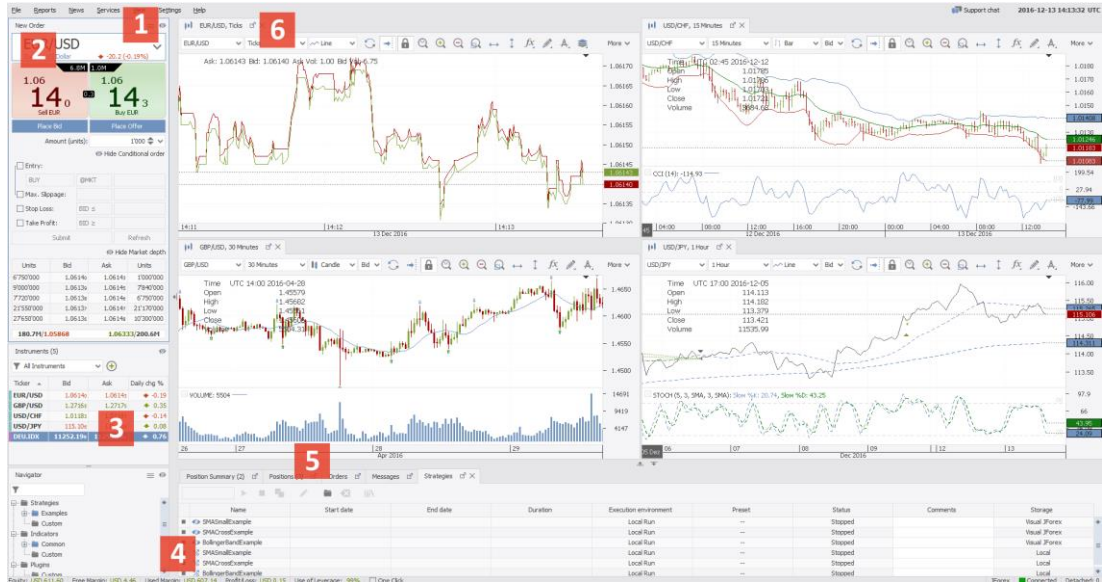
For any other login issues, please take a screenshot of the error message and send it together with your login to our support.



*LIVE clients who experience login issues, may call our trading support hotline to use the phone trading service.*



## 4. The JForex Workspace



*Workspace overview*

This section provides an overview of the main tools and features of the JForex platform. Once you have successfully started JForex, you should see the workspace of the trading platform.

The workspace is divided into six different functional areas.

1. Menu bar
2. Trading Panel
3. Navigator
4. Status bar
5. Position, Order, Message and Strategies tab
6. Charts and Toolbar

## 4.1 The Menu Bar

File Reports News Services View Settings Help

### Menu bar

At the top of the workspace you will see the JForex menu bar providing several options which are described briefly.

**File:** The file menu provides options to load, save and restore workspaces as well as to reconnect and exit the platform.



If the platform “lost” your workspace after an update, use the **Restore from...** feature to restore your workspace from the previous version.

**Reports:** Under this option, you will find reports about your trading activity and can access your account settings (*My Account*). The *Portfolio Statement* shows your current balance and provides an overview of the daily profit and loss for each instrument in the account currency as well as a detailed view of the daily profit and loss for each transaction. The *Position Report* shows the profit and loss of each position over the whole trading period.

**News:** Contains market news, calculators and access to the live economic calendar.

**Services:** Through this section you can subscribe to notifications (Email and SMS), Signal Trading, open Visual JForex or visit the JStore.

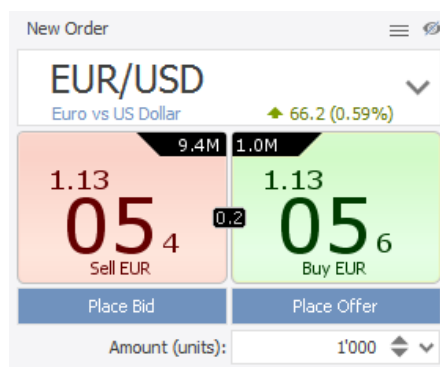
**View:** This menu allows to open additional tabs or windows such as the market overview, the historical data manager or the historical tester.

**Settings:** This menu allows to switch between different languages and display the preference settings among others.

**Help:** Provides access to the comprehensive platform manual, video tutorials and the FAQ section and - most important - the support chat (both in demo and live).

## 4.2 Trading Panel

### 4.2.1 Basic Order Panel



Order Entry

The basic order panel displays the current best BID and ASK price for the active instrument. The name of the active instrument is displayed in the top section of the panel. You can change the instrument by clicking on the small arrow or on the name of the instrument (enables also the search function).

In the top right corner of the BID price box and the top left corner of the ASK price box, the volume which is available at the best price, is shown. The small black band between the two price boxes displays the current spread.

Click on the current ASK or BID price to submit a market order to buy or sell for the defined amount. If one-click orders are enabled, the order is submitted directly without further warning.

A click on **Place BID/Place OFFERS** submits a BID or OFFER. These are limit orders which above a certain amount (subject to the specific instrument) are visible in the market depth by other internal participants in the marketplace and allow you to perform market-making activities.

The amount is by default set to units. If you prefer another measurement unit, you can change the setting in -> **Settings -> Preferences -> Instruments**.



*The minimum amount for currencies is 1000 units, for XAU/USD 1 ounce, for XAG 50 ounces and for CFDs 1 contract.*

#### 4.2.2 Conditional Order Panel

*Conditional Orders*

Conditional orders are pending orders that are triggered and sent for execution once the conditions are met. You can set the conditions in the **Conditional orders** window.

Click on entry, then specify the entry order type and the side (**BUY** or **SELL**). The trading platform offers Stop, Limit and MIT orders. For Stop orders, you can choose to set the trigger on either the BID or ASK side. The allowed amount of slippage for Stop and MIT orders can also be set. Stop loss or take profit orders may also be added.

Upon selecting an order type, the price input fields display a predefined price (which can be changed). This price is derived from the current market price and the default distance values for entry, stop and take profit orders as set in -> **Settings -> Preferences -> Instruments**. The **Refresh** button updates the price input fields by using the current market price.

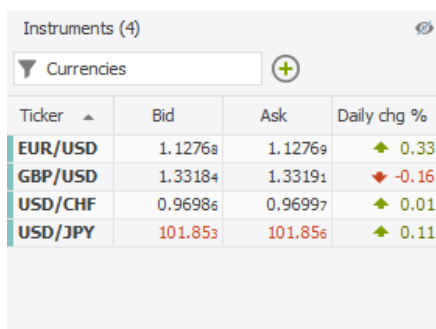
#### 4.2.3 Market Depth

Units	Bid	Ask	Units
9'370'000	1.13054	1.13056	1'000'000
3'450'000	1.13053	1.13058	1'870'000
10'610'000	1.13052	1.13059	6'370'000
44'720'000	1.13051	1.13060	39'650'000
78'750'000	1.13050	1.13061	16'400'000
<b>207.2M/1.12985</b>		<b>1.13065/228.8M</b>	

*Market Depth*

The **Market Depth** window shows by default a breakdown of the available liquidity at 5 levels. Right-click to change the market depth to 3 or 10 levels.

## 4.2.4 Instruments



Ticker	Bid	Ask	Daily chg %
EUR/USD	1.12768	1.12769	▲ 0.33
GBP/USD	1.33184	1.33191	▼ -0.16
USD/CHF	0.96986	0.96997	▲ 0.01
USD/JPY	101.853	101.856	▲ 0.11

Instruments

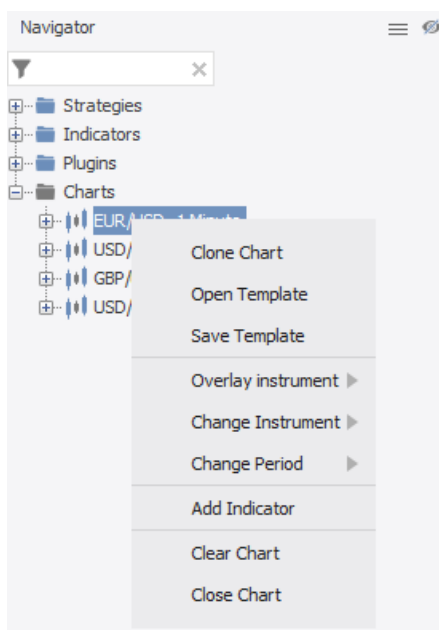
The **Instruments** window shows the instruments to which you are currently subscribed. Click on an instrument to select it as the active one (for the order panel).

Right-click on any instrument or in the window and then on **Subscribe for Instrument** to add new instruments to the list. You can also click on the '+' icon to subscribe to more instruments. Select a subscribed instrument, then right-click it to open a menu with various options such as **Open Chart**.



*Reducing the number of subscribed instruments can enhance the performance of the platform. Removing an instrument is only possible if it is currently not in use (e.g. open position or charts).*

## 4.3 Navigator



Navigator window

The **Navigator** provides an overview of the strategies, custom indicators, plugins and charts currently used or available. Right-click on the specific section or object to add a new strategy, chart or edit settings.

In the above example, a right-click on the chart or instrument title, brings up an additional menu which allows you to perform different operations. You can save the current chart layout as template or open an existing one. **Add instrument** adds an additional instrument to the chart which can be used to compare price movements. **Clear Chart** deletes all graphical objects and indicators from the selected chart.

Certain objects such as indicators can be dragged and dropped directly onto a chart.

## 4.4 Status bar

Equity: USD 621.00 Free Margin: USD 611.00 Used Margin: USD 10.00 Profit/Loss: USD 2.26 Use of Leverage: 2%  One Click

Status Bar

With the help of the status bar you can monitor your equity and risk in one glance. The data as displayed here is updated in quasi-real time, this means on order execution and in frequent intervals. Please note that at server level equity is updated in true real-time.

**Equity** shows your current equity in the account base currency considering trading profits and losses, debit/credit operations on the account as well as commission and fees.

**Free Margin** is calculated as the difference between *Used Margin* and *Equity*.

**Used Margin** equals the exposure (net position sum) in the account base currency divided by the leverage.

**Profit/Loss** shows the combined profit or loss in the account base currency from all currently open positions.

**Use of leverage** shows how much of the collateral is currently used by the exposure on the account. At 100%, the **Used Margin** equals your **Equity** and there is no **Free Margin** left.



*Please get to know the margin call and margin cut policies. If the use of leverage is equal or above 100%, you are not allowed to increase the exposure on the account. At levels equal or above 200%, the system opens hedging positions in the opposite direction or decreases existing positions in size (depending on your settings) to reduce the use of leverage to 100% or less.*

If **One Click** is enabled, orders are submitted directly without any further confirmation (both market and pending orders). It is advisable to disable this function.

## 4.5 Tabs

In the default view, there are five tabs: **Position Summary**, **Positions**, **Orders**, **Messages** and **Strategies**. If you use other tools such as the **Historical Tester** or **Live Economic Calendar**, additional tabs are added.

### 4.5.1 Position Summary

Position Summary (2)		Positions (3)	Orders	Messages	Strategies				
Instrument	Direction	Long/Short	Amount	Price	P/L	Used margin			
USD/CHF	FLAT	1'000 / 1'000 (1/1)	USD 0.0	N/A	\$ -0.11	\$ 0.00			
EUR/USD	LONG	100'000 / 0 (1/0)	EUR 100'000	1.1322s	\$ -12.00	\$ 1'132.28			

*Position Summary tab*

The position summary displays the net exposure for each instrument. Suppose that you have two EUR/USD positions, each 100 000 in size. In that case the summary will display a 200 000 Long exposure. If you have both long and short positions which are equal in size, the net exposure is zero and the direction is shown as flat (**Used Margin** is zero).

### 4.5.2 Positions

Position Summary (2)		Positions (3)	Orders (2)	Messages	Strategies					
Ext. ID	Pos. ID	Instrument	Direction	Amount	Price	Current	Stop Loss	Take Profit	P/L pips	P/L
jfk9pons	113134771	EUR/USD	LONG	EUR 100'000	1.1322s	1.1314s	BID ≤ 1.10000	1.15000	-8.4	\$ -84.00
jfq78aktn	113134791	USD/CHF	LONG	USD 1'000	0.96617	0.9668s			6.6	\$ 0.68
jf19iyjvb	113134797	USD/CHF	SHORT	USD 1'000	0.9660s	0.9669s			-8.7	\$ -0.90

*Positions tab*

This tab shows all currently open positions. Once a position is closed, it is no longer shown here. If the position has a stop loss or take profit order assigned, the order conditions are shown in the respective column. Right-click on a position to close it, to add or modify stop loss and take profit orders. Check the box on the left side to select several positions and perform multiple operations at once. The profit and loss of the position is shown in pips and the quote currency exclusive of commissions. Click the red 'X' (last column) to close the position at market.



*The column price in the **Positions** tab refers to the opening price of the position. If the position stays open overnight, the opening price in the position tab is adjusted to reflect the impact of the swap on the position's profit and loss.*

### 4.5.3 Orders

Position Summary (2)		Positions (3)		Orders (2)		Messages		Strategies		X			
<input checked="" type="checkbox"/>	Time	Ext. ID	Pos. ID	Order ID	Instrument	Side	Amount	Order	Price	Type	Status	Expiration (...)	
<input type="checkbox"/>	2016-09-0...	jf1k9pons	113134771	442662647	EUR/USD	SELL	EUR 100'000	SL	BID ≤ 1.10...	STOP	PENDING	GTC	X
<input type="checkbox"/>	2016-09-0...	jf1k9pons	113134771	442662668	EUR/USD	SELL	EUR 100'000	TP	1.15000	LIMIT	PENDING	GTC	X

*Orders tab*

The orders tab displays all active pending orders. Right-click on an order to modify or cancel it. Check the box on the left side to select several orders and close them at once. Click the red 'X' (last column) to cancel the order.

### 4.5.4 Messages

Position Summary (2)		Positions (3)		Orders (2)		Messages		Strategies		X		
Copy Messages		Clear Messages		Messages								
Time	Messages											
2016-09-08 13:3...	Order ACCEPTED: #442662668 TAKE PROFIT SELL 0.1 mil. EUR/USD @ LIMIT 1.15 IF BID => 1.15 EXPIRES: GTC - Position #113134771											
2016-09-08 13:3...	Closing order TAKE PROFIT SELL 100'000 EUR/USD @ LIMIT 1.15 IF BID => 1.15 EXPIRES: GTC had been sent at 2016-09-08 13:34:15 manually											
2016-09-08 13:3...	Sending order: TAKE PROFIT SELL 100'000 EUR/USD @ LIMIT 1.15 IF BID => 1.15											
2016-09-08 13:3...	Order ACCEPTED: #442662647 STOP LOSS SELL 0.1 mil. EUR/USD @ MKT IF BID <= 1.1 EXPIRES: GTC - Position #113134771											
2016-09-08 13:3...	Closing order STOP LOSSSELL 100'000 EUR/USD @ MKT IF BID <= 1.10 EXPIRES: GTC had been sent at 2016-09-08 13:34:07 manually											

*Messages tab*

Here you can see your trading activities for the current trading session and feedback from the trading platform. Historical records can be accessed through the **Activity Log (-> Reports)**.

Order ACCEPTED indicates that your order has been received and validated by our servers while Order FILLED means that it has been filled (fully or partially). Orders may also be rejected; the messages give some explanation of reasons (e.g. insufficient margin). You are advised to monitor the messages closely.

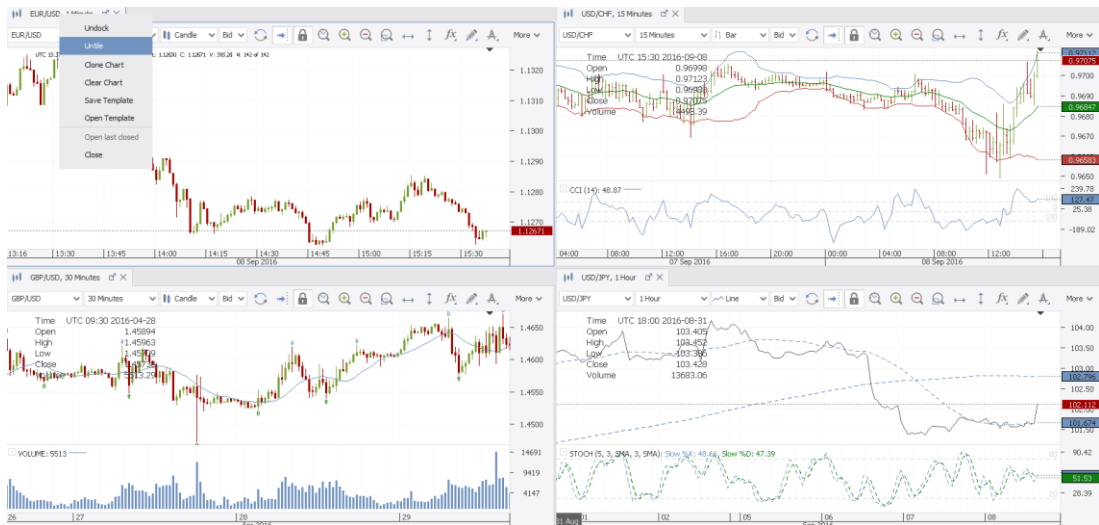
## 4.5.5 Strategies

Name	Start date	End date	Duration	Execution enviro...	Preset	Status	Comments	Storage
SMASmallExa...	--	--	--	Local Run	--	Stopped		Visual JForex
SMACrossEx...	--	--	--	Local Run	--	Stopped		Visual JForex
BollingerBan...	--	--	--	Local Run	--	Stopped		Visual JForex
SMASmallExa...	--	--	--	Local Run	--	Stopped		Local
SMACrossEx...	--	--	--	Local Run	--	Stopped		Local

Strategies tab

The **Strategies** tab presents an overview of the strategies that you added to your workspace and allows you to perform various functions on them.

## 4.6 Charts



Charts

By default, the platform displays four tiled chart windows. The price is displayed on the right axis of the chart and the date and time at the bottom axis. Right-click on a chart title, then on **Untile** or simply double-click the chart title to maximize the chart. Chart settings (indicators and graphical elements) are stored in templates which can be saved and used across charts.



Tick chart setting

JForex offers conventional time based charts as well as price change charts such as Renko or Tick Bars. You can set the time frame or price change in the drop-down menu next to the instrument. The smallest time unit are ticks which are displayed for both bid and ask prices simultaneously.

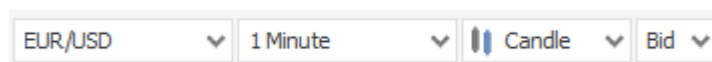


Chart setting

If you choose a larger time frame, you need to choose if you would like to display bid or ask.



### Chart icons

You can access more chart functions through the icon bar. Most of the icons are self-explanatory. Below are some of the more widely used functions explained in detail.



The Reload button reloads chart data from our servers. This is helpful if there is missing chart data due to a slow connection or connection loss.



These three icons allow to add indicators, draw in the chart and add retracements.



Click on this icon to switch on/off the OHLC widget which displays information on the selected time unit.



Themes allow you to customize the color and text settings of your charts.



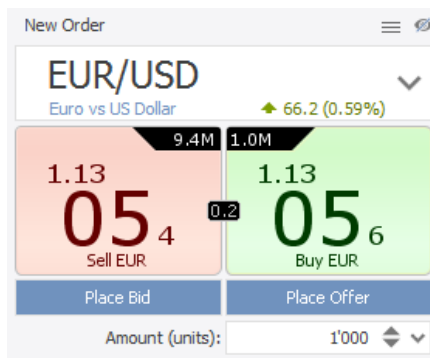


# 5. Placing and managing orders

## 5.1 Placing market orders

There are several different ways to submit market orders.

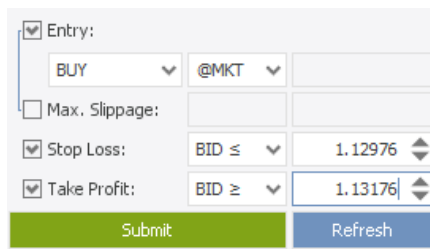
### BASIC ORDER PANEL



Type the desired amount in the **Amount** field and depending on the direction of your trade, click the Buy respectively the Sell button. If One Click (see status bar) trading is enabled, the order is submitted directly. Otherwise, an additional confirmation is necessary.

Order Entry Panel

### CONDITIONAL ORDER PANEL



The Conditional Order panel allows to submit market orders. Set the amount in the basic order panel, then click on **Entry**, set the order type to **At Market** and set your side (**BUY** or **SELL**). The advantage here is that you can add stop loss and take profit orders and define a negative **Slippage** limit.

Conditional Order Panel

### CHART

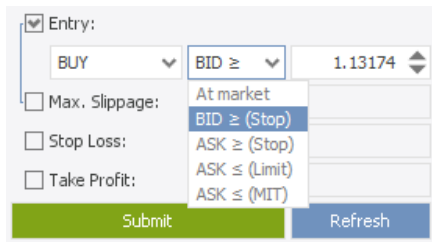


Right-click anywhere in the chart, then select either **BUY@MARKET** or **SELL@MARKET**. A new order window pops up allowing to set the amount, add stop loss and take profit orders and define a slippage limit.

Conditional Order Panel

## 5.2 Placing conditional orders

### CONDITIONAL ORDER PANEL



Conditional orders

Set the amount in the basic order panel, then click on **Entry**, choose between different order types (**Stop**, **Limit** and **MIT** orders) and set your side (**BUY** or **SELL**). If needed, add stop loss and take profit orders.

A negative slippage limit can be set for market and entry stop orders. For MIT orders you can define a slippage limit which, once the order has been triggered, relaxes the execution price condition.

For stop orders (including stop loss), the trigger price can be BID or ASK. The execution price is however always ASK for buy and BID for sell orders.

The **Refresh** button updates the price input fields by using the current market price.



*It is not possible to set a slippage condition for limit orders as they, by design, do not allow negative slippage. They are either executed at the trigger price or better. If this is not possible, the orders are rejected or only partially filled.*

### CHART

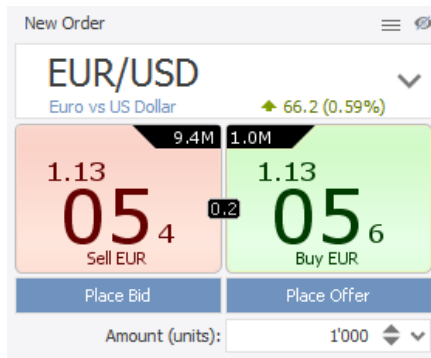


Placing pending orders in the chart

Right-click above the current price, if you want to submit a sell limit or buy stop order and below the chart, if you want to submit a buy limit or sell stop order. A new order window pops up allowing to set the amount and add stop loss and take profit.

## 5.3 Placing Bid and Ask Offers

### ORDER ENTRY PANEL



New Order

EUR/USD  
Euro vs US Dollar ▲ 66.2 (0.59%)

9.4M 1.0M

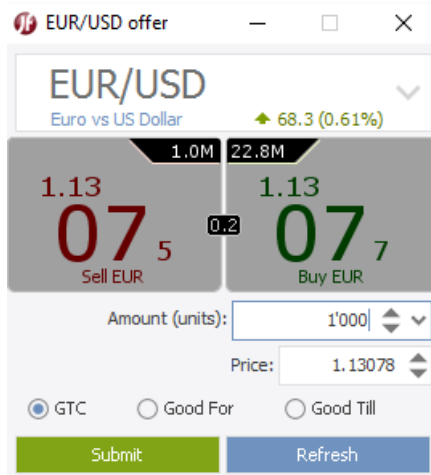
1.13 05<sub>4</sub> 0.2 1.13 05<sub>6</sub>

Sell EUR Buy EUR

Place Bid Place Offer

Amount (units): 1'000

Basic Order Panel



EUR/USD offer

EUR/USD  
Euro vs US Dollar ▲ 68.3 (0.61%)

1.0M 22.8M

1.13 07<sub>5</sub> 0.2 1.13 07<sub>7</sub>

Sell EUR Buy EUR

Amount (units): 1'000

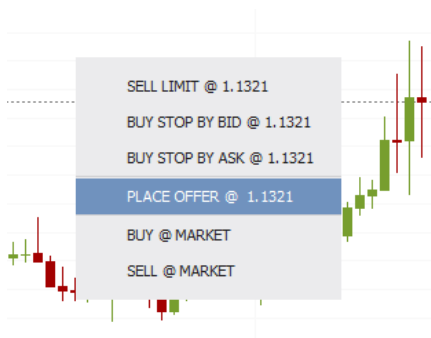
Price: 1.13078

GTC  Good For  Good Till

Submit Refresh

Place Offer Window

### CHART



Place Offer chart

Bids/Offers are very similar to limit orders and used to buy or sell an instrument at a specified price or better. In addition, Bids/Offers have several advantages.

As all Bids/Offers are placed directly in the marketplace, they can be taken by liquidity consumers, thus allowing the trader to avoid a spread cost.

The required margin for Bids/Offers is reserved instantly when the order is accepted, that means less time is needed to process the execution. Additionally, traders can specify the time period allowed for the system to work the order.

Click on **Place Bid** or **Place Offer**. A new window pops up.

Set the amount, the trigger price and specify the time period the order is valid (**GTC** - Good Till Cancelled / **Good For** / **Good Till**). Click **OK** to submit the order.

## 5.4 Closing and partially closing positions

Position Summary (1)	Positions (1)	Orders	Messages	Strategies	X
Ext. ID	Pos. ID	Instrument	Direction		
☑	jf19iyjvb	113134797	USD/CHF	SHORT	

- Close Position
- Conditional Close
- Merge position
- Add Stop Loss
- Edit Stop Loss
- Cancel Stop Loss
- Add Take Profit
- Edit Take Profit
- Cancel Take Profit

*Closing and partially closing positions*

Right-click the position in the position tab. Then click on **Close Position**. You can also click on the red 'x' icon in the last column. The system then submits a market order to close the position. Order execution is subject to market and order conditions (e.g. default slippage limits). The close order may be fully executed, partially executed or rejected. If you would like to close several positions at once, tick the boxes of the respective positions, then right-click on the selection and on **Close Selected**.

Cond. Close: 113136... — □ ×

**EUR/USD**  
Euro vs US Dollar ▲ 64.5 (0.57%)

5.6M	1.0M
1.13037	1.13039
Sell EUR	Buy EUR

Total amount (units):

Amount (units):

Max. Slippage:

Submit

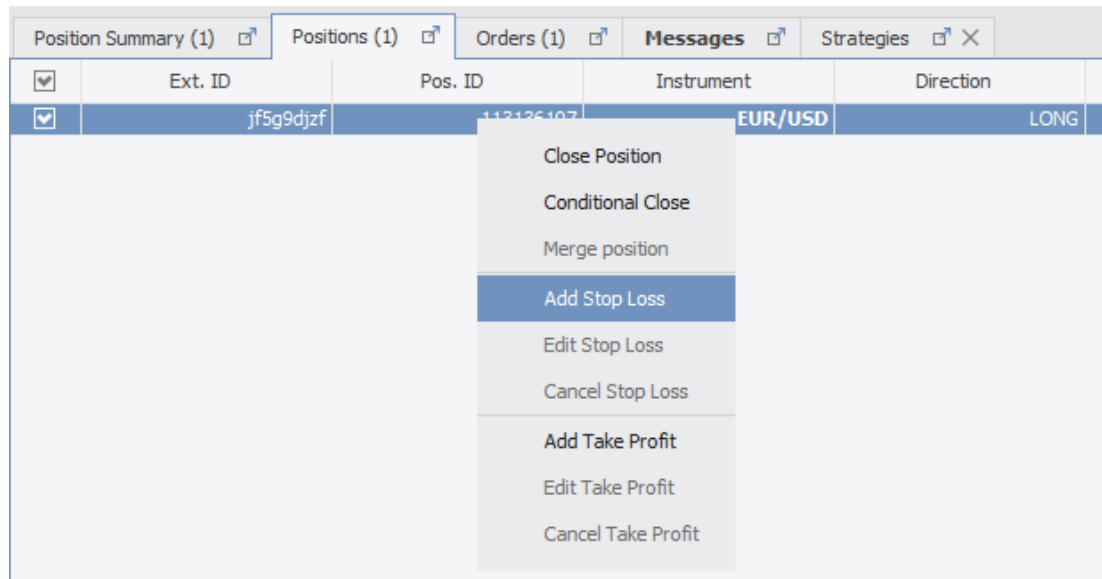
*Conditional Close*

You can partially close a position. Select the position and click on **Conditional Close**. In the **Conditional Close** window set the amount by which you would like to reduce the position.

The Conditional Close window also allows you to set a slippage limit for the market order that is used to close the position.

## 5.5 Adding SL/TP to an existing position or entry order

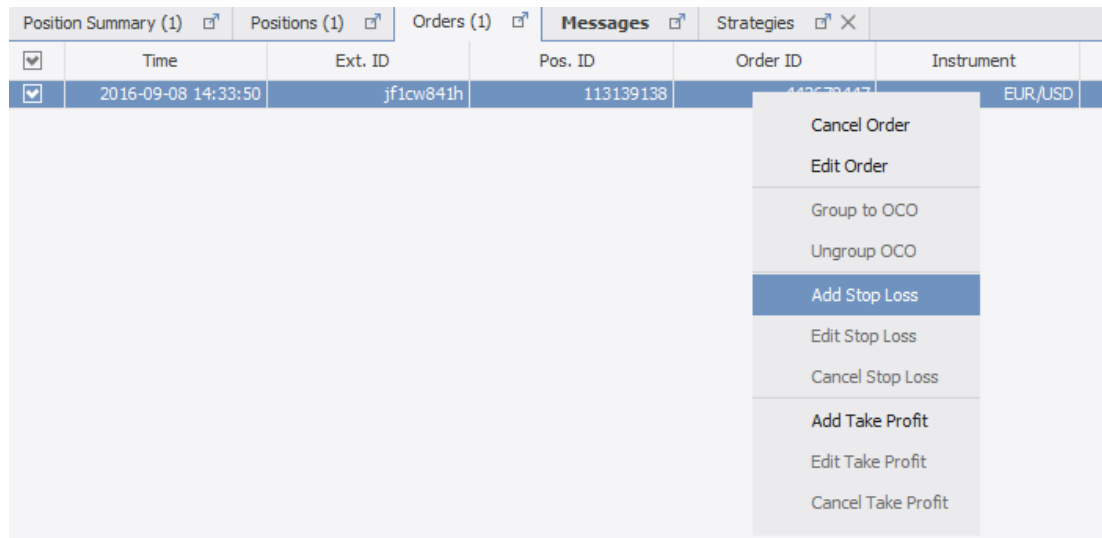
### POSITION TAB



*Position tab*

Right-click the position in the position tab and click on **Add Stop Loss** or **Add Take Profit** to add a SL or TP to an existing position.

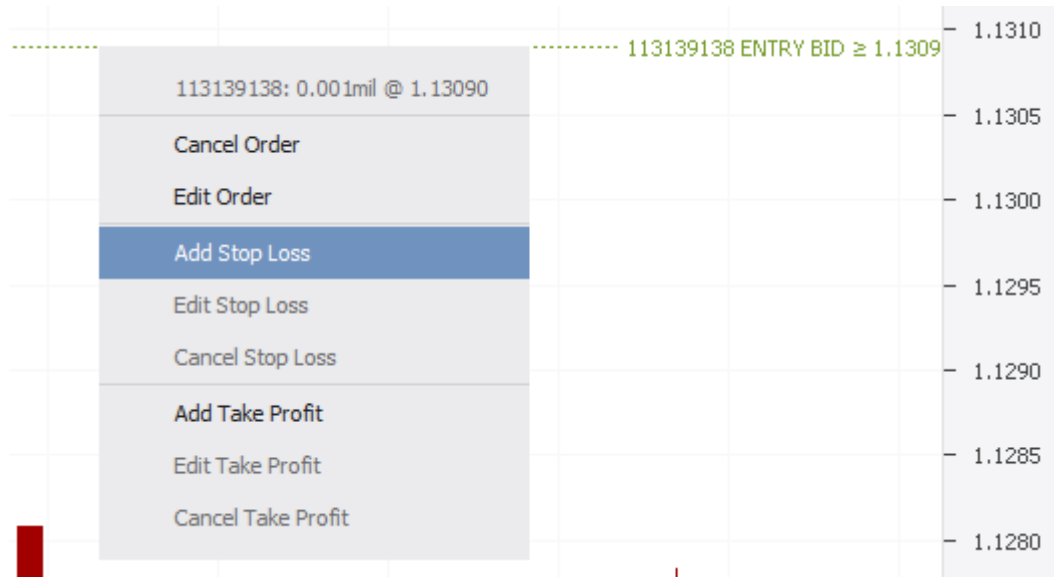
### ORDERS TAB



*Orders tab*

Right-click the pending entry order in **Orders**, then click on **Add Stop Loss** or **Add Take Profit**.

## CHART



*Modifying orders in the chart*

First double, then right-click the dotted line for the entry order. Click on **Add Stop Loss** or **Add Take Profit**.

## 5.6 Modifying and cancelling orders

### POSITION TAB

Position Summary (1)	Positions (1)	Orders (2)	Messages (3)	Strategies
<input checked="" type="checkbox"/>	Ext. ID	Pos. ID	Instrument	Direction
<input checked="" type="checkbox"/>	jf5g9djzf	113136197	EUR/USD	LONG

Close Position
Conditional Close
Merge position
Add Stop Loss
Edit Stop Loss
Cancel Stop Loss
Add Take Profit
Edit Take Profit
Cancel Take Profit

*Modifying ST/TP orders for an existing position*

Right-click an existing position to open the menu. Click on **Edit Stop Loss** or **Cancel Stop Loss**. The same process applies to take profit orders.

## ORDERS TAB

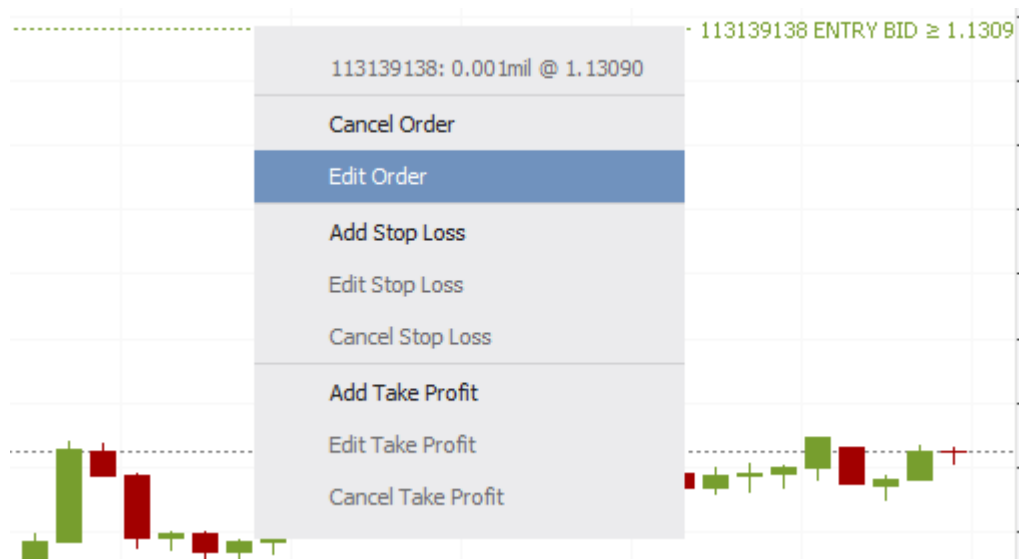
Position Summary (1)	Positions (1)	Orders (1)	Messages	Strategies	X
Time	Ext. ID	Pos. ID	Order ID	Instrument	
2016-09-08 14:33:50	jf1cw841h	113139138	442672447	EURUSD	

- Cancel Order
- Edit Order**
- Group to OCO
- Ungroup OCO
- Add Stop Loss
- Edit Stop Loss
- Cancel Stop Loss
- Add Take Profit
- Edit Take Profit
- Cancel Take Profit

*Modifying orders in the Orders tab*

Right-click an existing position to open the menu. Click on **Edit Stop Loss** or **Cancel Stop Loss**. The same process applies to take profit orders. An alternative method to cancel an order is to click the red 'x' icon in the last column of the Order tab.

## CHART



*Modifying orders in the chart*

By default, pending orders are displayed as dotted lines in the chart. Double click the order, then shift it up- or downwards to change the trigger price. Press the **Delete** key to cancel it. Alternatively, you can first double, then right-click the dotted order line to edit or cancel it.

## 5.7 Merging positions

Position Summary (1)	Positions (5)	Orders (2)	Messages	Strategies			
Ext. ID	Pos. ID	Instrument	Direction	Amount	Price	Current	
<input checked="" type="checkbox"/>	jf5g9djzf	113136197	EUR/USD	LONG	EUR 1'000	1.13040	1.12710
<input checked="" type="checkbox"/>	jf24mr1e	113139520	EUR/USD	LONG	EUR 1'000	1.12710	1.12710
<input checked="" type="checkbox"/>	jf1elx3s	113139521	EUR/USD	LONG	EUR 1'000	1.12710	1.12710
<input checked="" type="checkbox"/>	jf180fpo1	113139522	EUR/USD	LONG	EUR 1'000	1.12710	1.12710
<input checked="" type="checkbox"/>	jfbf36e10	113139523	EUR/USD	SHORT	EUR 1'000	1.12712	1.12712

Close positions (5)

Conditional Close

Merge Positions (5)

Add Stop Loss

Edit Stop Loss

Cancel Stop Loss

Add Take Profit

Edit Take Profit

Cancel Take Profit

### Merging positions

In JForex you can have both long and short positions for the same instrument (hedging). Merging allows you to offset the exposure between several positions for the same instrument without a market transaction, hence avoiding commissions and spread.

Select the positions you would like to merge, then right-click on any position and press **Merge (X)**.

Merging two positions of equal size in opposite directions closes the positions. Merging several positions of different size closes the offsetting parts, the remaining part is assigned a new position ID. You find information on merged position in the **Merge Log (-> Reports)**.

## 5.8 Adding a Trailing Stop

Trailing stops can be added to stop loss and entry stop orders and change the trigger price automatically upon meeting certain conditions. These conditions differ for stop loss and entry orders.

At the moment the trailing stop is added or ANYTIME the order is modified, the current market price is defined as the Base Price. You can see the base price in the **Messages** tab or **Activity log**. Once the trailing stop has moved the order, a new base price is set. For stop loss orders of pending entry orders, the opening price of the position becomes the base price once the entry order has been triggered

The Base price is used as a reference. You also need to specify a distance (Trailing Steps), the minimum being 10 pips. If the market price moves this specific distance below or above the base price (depending on the direction of your order and the order type), the trailing stop adjusts the trigger price. The size of the price adjustment is variable. The specific examples will make this clearer.



*The trailing step is server-based. This means that it is also active when your trading platform is switched off.*



## STOP LOSS ORDERS

The screenshot shows the 'Edit Stop Loss' window for EUR/USD. The current price is 1.12. The stop loss is set at 1.12642. The trailing step is set to 10 pips. The window includes fields for 'Amount (units): 1000', 'Stop Loss: BID ≤ 1.12642', and 'Trailing Step (pips): 10'. There are radio buttons for 'GTC', 'Good For', and 'Good Till', and 'Submit' and 'Cancel' buttons.

*Edit stop loss order to add a trailing stop*

Add a trailing step by right-clicking an existing stop loss order, then click on **Edit Stop Loss**. Check the box for **Trailing Step** and set the threshold in pips. Press **Submit**.

You can also add a trailing step when you add a stop loss order to an existing position or a pending entry stop order.

If the price moves in your favor (for long positions that is up and for short position down), the trailing step moves the stop loss order into the same direction, given that the market price moves beyond the threshold (base price and trailing step).

### Example:

- You buy EUR/USD at 1.1150 and add a SL at 1.1130 with trailing stop steps 10 pips
- Current Market BID is 1.1149 and set as base price
- Market BID reaches 1.1159 (= 10 pips from base price)
- SL is moved to 1.1140 and 1.1159 becomes the new base price
- Market jumps to 1.1179 (= 20 pips from base price)
- SL moved to 1.1160 and 1.1179 is the new base price

## ENTRY STOP ORDERS

The screenshot shows the 'Edit Entry Order' window for EUR/USD. The current price is 1.12. The entry order is set at 1.13090. The trailing step is set to 10 pips. The window includes fields for 'Amount (units): 1'000', 'Entry: BID ≥ 1.13090', and 'Trailing Step (pips): 10'. There are radio buttons for 'GTC', 'Good For', and 'Good Till', and 'Submit' and 'Cancel' buttons.

*Edit pending entry order to add a trailing stop*

Right-click the pending stop entry order in the **Orders** tab, then click on **Edit Order**. Check the box for **Trailing step** and set the threshold in pips. Press **Submit**.

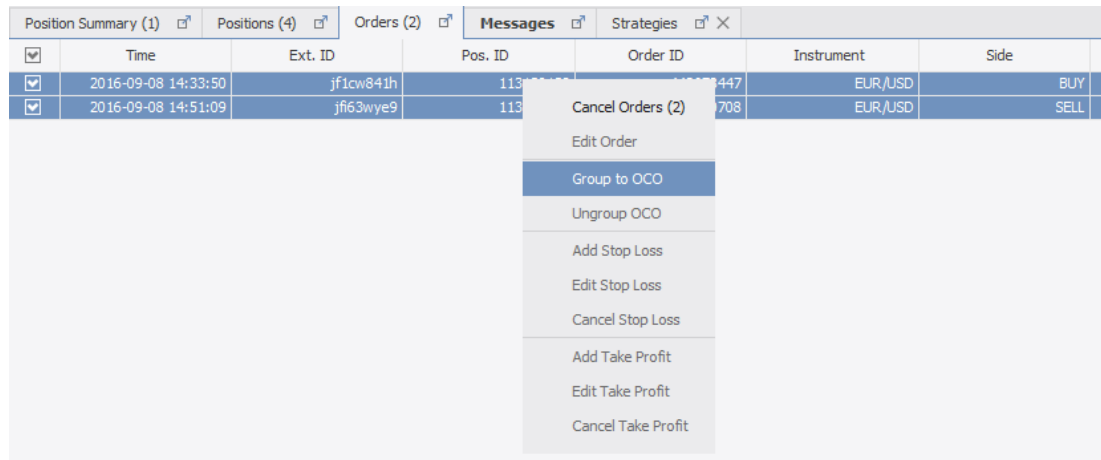
If the price becomes better with regards to opening the position (for long positions that is down and for short position up – contrary as for stop loss orders), the trailing stop moves the entry order into the same direction, given that the market price moves more than the threshold.

### Example:

- You want to buy EUR/USD if ASK is equal or bigger than 1.1150 and add trailing stop steps 10 pips
- Current market ASK is 1.1130 which is set at the base price
- Market ASK reaches 1.1120 (=10 pips from base price)
- Entry stop order is moved to 1.1140 and 1.1120 is the new base price
- Market ASK drops to 1.1100 (=20 pips from base price)
- Entry stop order is moved to 1.1120 and 1.1100 is the new base price

## 5.9 OCO (One-cancels the other) functionality

If you are unsure whether the market moves up or down, you may use the OCO (one cancels the other) functionality. This allows to combine two different entry orders for the same instrument. If one of the entry orders is triggered, the other gets cancelled.



<input type="checkbox"/>	Time	Ext. ID	Pos. ID	Order ID	Instrument	Side
<input checked="" type="checkbox"/>	2016-09-08 14:33:50	jf1cw841h	113	447	EUR/USD	BUY
<input checked="" type="checkbox"/>	2016-09-08 14:51:09	jf163wye9	113	708	EUR/USD	SELL

*Grouping orders to OCO*

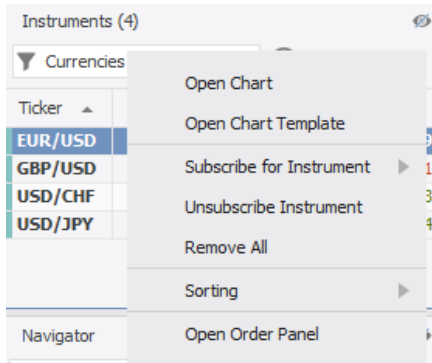
Tick the boxes for the corresponding two orders and right-click one of the orders, press **Group to OCO**. You can see which orders are grouped in the **Expiration (UTC)** column. If you want to ungroup orders, select both of the orders, right-click on any of them and press **Ungroup OCO**.

## 5.10 Historical orders

Only active orders and open positions are displayed in the **Orders** and **Positions** tab. Once an order has been executed or cancelled, it is no longer displayed. The same applies for closed positions. During the current trading session, you can refer to the **Messages** tab for information on your trading activity. After you close the platform, this information is cleared but you can access its records in the **Activity Log**. The **Trade Log** also provides information on historical orders.

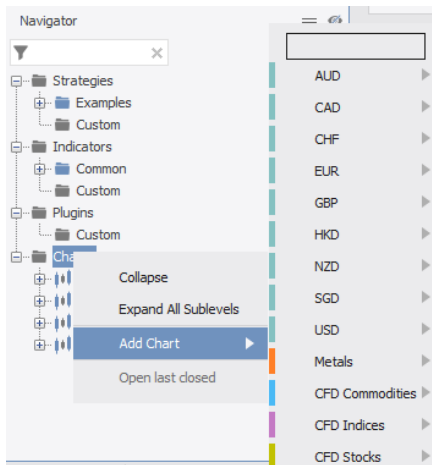
## 6. Using the Charts

### 6.1 Add a new chart or change the instrument in a chart



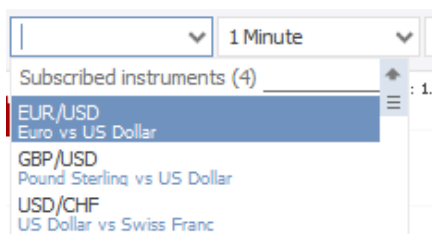
Right-click the instrument in the **Instruments** panel, then press **Open Chart**.

*Adding chart through Instruments panel*



You can also right-click **Charts** in the Navigator window, then point the cursor on **Add Chart** and select the instrument.

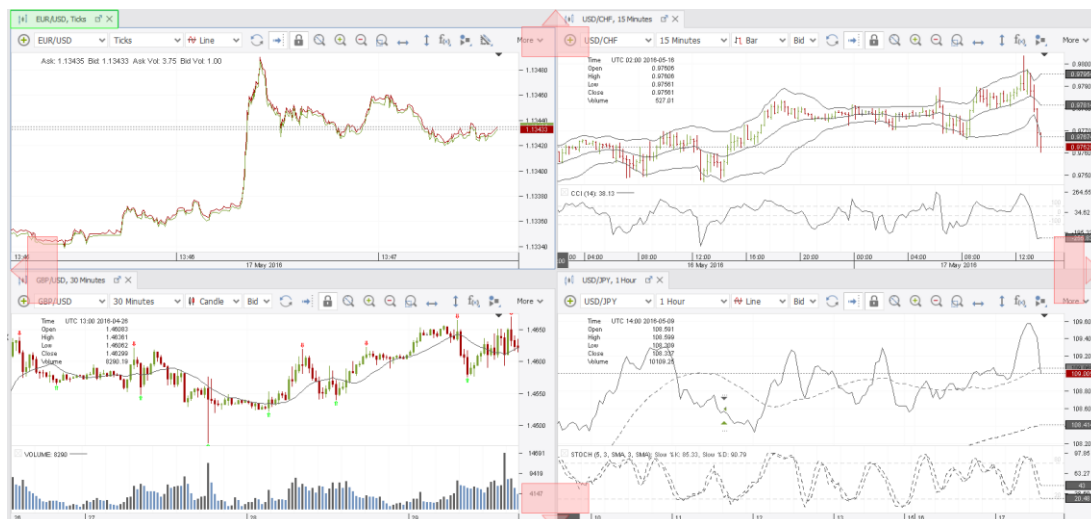
*Adding chart through Navigator panel*



Instead of opening a new chart, you may simply change the instrument in your chart. Click on the current instrument above the chart. A drop-down menu opens showing all subscribed instruments

*Changing the instrument in the chart window*

## 6.2 Arranging the charts



Arranging charts

Charts can be undocked and arranged in different ways. Click on the chart tab showing the instrument name and time, holding the button pressed, then move the cursor around to freely arrange the chart.

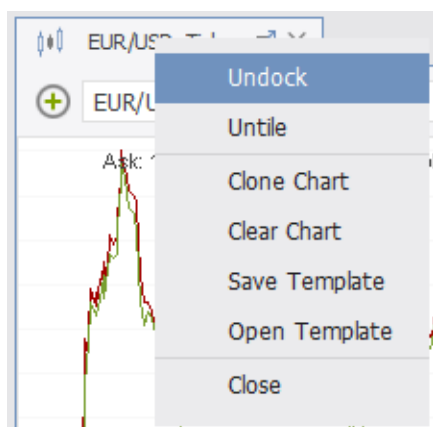


Chart functions

A right-click on the chart tab and reveals options to **Undock** or **Arrange** the charts. If the charts are already arranged, you can click on **Untile** or double-click the chart tab to maximize the chart. If the chart is undocked, click on 'x' in the chart tab to re-dock it.

## 6.3 Navigating the Charts

Click anywhere in the chart and hold the button pressed to move around the chart. By default, the charts are in locked mode and movement is restricted to the time axis.



Click on the lock icon, to unlock the charts (move along both price and time axes)



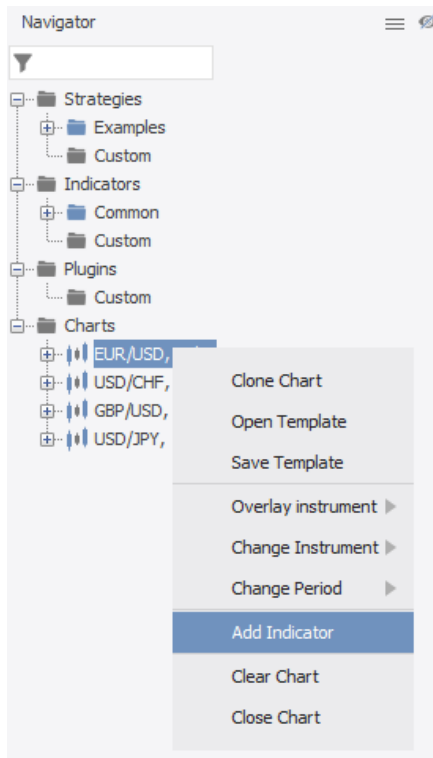
You can zoom in and out the charts by using the zoom icons. If you want to scale only one axis, click on the time or price axis and hold the button pressed, then move the cursor to zoom in or out.



If you want to go to a specific point in time, use the custom range function.

## 6.4 Add indicators

### NAVIGATOR



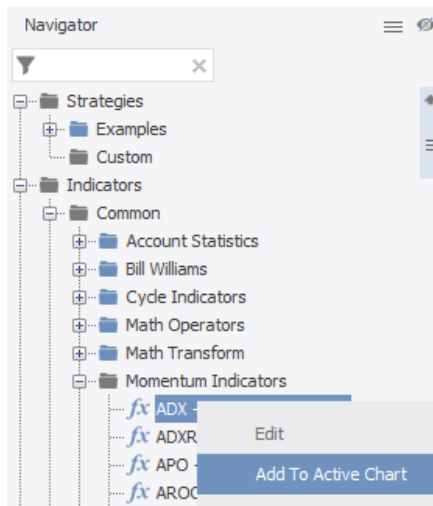
Right-click the chart title in the **Workspace Navigator** panel, then on **Add Indicator** and **More...** to open the indicator window.

In the **Add indicator** window, indicators are ordered by categories. You can also search for a specific indicator by using the **Quick Filter**. Once you have an indicator selected, the parameters can be edited.

*Add an indicator through the Navigator*



Alternatively, click on the **Indicators** icon above the chart, then on **Add Indicator** to open the indicator window.

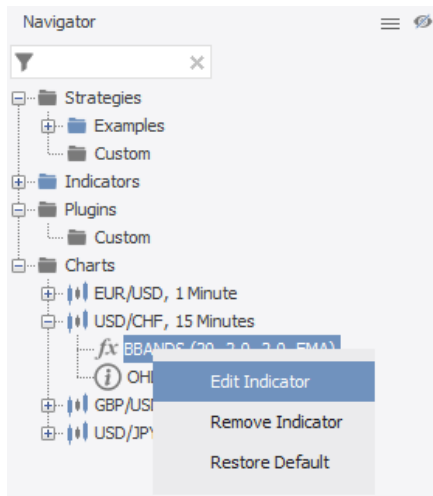


In the Navigator window you can also find a list of available indicators. Select the indicator and drag and drop it onto the chart or right-click the indicator and click on **Add to Active Chart**.

*List of indicators*

## 6.5 Edit and remove indicators

### NAVIGATOR



Right-click the indicator to display options to **Edit** or **Remove** the indicator.

*Edit or Remove Indicator in the Navigator*

### CHART

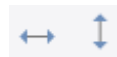


Right-click the indicator in chart window to display options to **Edit** or **Remove**.

*Edit or Remove Indicator in the Chart*

## 6.6 Draw on the charts

You can add various graphical elements to the chart.



Click on these icons to add price or time markers.



This functions allows to add shorter lines, text or arrows to the chart.



Click on this icon to add diverse retracements.

Once added, the elements can be edited or removed in two ways. Double, then right-click an element to edit or remove it. Alternatively, double-click the element and press the **Delete** key.

## 6.7 Using templates

You may want to use the same setup of time frame, indicators and graphical elements across various instruments. Right-click the chart tab or right-click on the chart title in the navigator panel, then click on **Save Template** to store the current setup or **Open Template** to open a new chart with the saved settings.



*Workspaces save the full platform setup including the default settings, subscribed instruments, charts arrangement and chart setups including indicators, time frames and themes. Templates refer only to the current chart setup.*

## 6.8 Changing the Chart theme



Click on the theme button to open the theme settings. You can choose between different chart themes or create your own customizing the color of candles, indicators and the background among others.

# 7. Strategies

## 7.1 Creating Strategies

In JForex you can develop, test and run [automated trading strategies](#).

### Programming in Java language

You can program your own strategies, indicators and plugins using the JForex API (JAVA based). JForex already contains an Integrated Development Environment ([IDE](#)) but you can also use the API separate from the platform through the [SDK](#). More information can be found in the [Wiki](#) or in the programming [documentation](#).

Short list of unique functions available in JForex API:

- [Custom Indicators](#)
- [Custom Plugins](#) and [Chart Widgets](#)
- [Tick Historical Data](#)
- [Market Depth Data](#)
- [Send e-mail function](#)
- [News Data feed](#)

### Visual JForex

With [Visual JForex](#) you can build automated trading strategies with a couple of mouse clicks. No programming knowledge is required. You can launch Visual JForex by clicking on -> **Services** -> **Visual JForex** in your trading platform.



*Visual JForex is not part of the JForex trading platform but a separate web based application*

## 7.2 Testing Strategies

JForex allows you to back test strategies on a high quality historical data feed using the [Historical Tester](#). The strategy testing process is highly configurable with respect to the speed of the test, the parameters of the test account, the degree of integration of historical data, and furthermore with respect to the strategy optimization.

Right-click on **Strategies** in the Navigator window, then click on **Open Strategy** to load the strategy. Then right-click on the strategy's name. If the strategy is already compiled (in \*.jfx format), click on **Test**. If it is not compiled yet (in \*.java format), click on **Compile**. Once it has been successfully compiled, right-click the strategy again and click on **Test**. The strategy is now loaded into the **Historical Tester**. Adjust the settings to meet your preferences, set the instrument and time range and click **Start**.



## 7.3 Running Strategies

Strategies can be run locally on your workstation or per the remote run function on our servers. **Local run** is the default way of strategy execution and means that the strategy will be run on your workstation, allowing the use of local resources (like file system, libraries, other java classes, etc.) On the other hand while [Remote run](#) cannot access the local resources, it has several advantages over **Local run**:

- the Remote servers are located near by the Price Feed server i.e. a price delay is minimal,
- the Remote servers are located near by the Orders Execution server i.e. a execution delay is minimal,
- a remotely launched strategy can be stopped from any computer.

## 8. Reports

The position, orders and message tabs as well as the status bar provide information on current positions, orders and equity. You can find more detailed and historical information in the reports which you can access through Portfolio in the menu bar. This section provides a short overview of the main reports.

### 8.1 Portfolio Statement

The **Portfolio Statement** shows the profit and loss in the account base currency. It is day-to-day based. A trading day starts/ends at 21 GMT (summer season) / 22 GMT (winter season). The profit and loss is calculated using the settlement price (end of trading day) for previous trading days and the current market price for the ongoing trading day.

The statement offers several detail levels. By default, it is set to **Daily Details** displaying the daily profit and loss per instrument and the account balance. The detail level can also be set to order or trade level, in that case the daily profit and loss per order and trade is displayed respectively.

### 8.2 Intraday Statement

The **Intraday Statement** shows an overview of all trades done intraday. If you hold positions from the previous trading day, their **Order ID** is displayed as **Rollover Open**.



*The Equity shown in the intraday statement, contrary to the equity figure shown in the portfolio statement or the status bar, is exclusive of commissions.*

### 8.3 Position Report

The position report provides an overview of open and closed positions. Details include profit and loss in the secondary currency, swaps and commission paid per position.

While the portfolio statement uses a day-to-day (and transaction) based approach, the position report considers the full trading period for its calculation.

### 8.4 Activity Log

The activity log displays records of your trading activity and platform feedback. For the current trading session, you can access these also through the **Messages tab**.

## 8.5 Rollovers

This report displays your current rollover policy and the swaps that incurred on your positions in detail. Other reports, such as the portfolio statement or the position report show your rollovers as well but in a more aggregated format.

## 8.6 My Account

The main functions that you can access through this statement are summarized below:

- Set margin mode (partial hedge or total close)
- Set Equity stop loss
- Change security settings
- Link account to FX community
- Deposit and withdraw funds (LIVE accounts only)
- Apply for bonus programs



## 9. More Questions?

This quick start manual provides a basic introduction into the JForex platform and is by far not exhaustive. If you have more questions about the platform, account opening or technical issues, please do not hesitate to contact us.

### 9.1 Support Chat

Use the secure support chat in the platform (-> **Help** -> **Support Chat**) to contact us. If you have general questions, you may contact us through the support chat window on our website.

### 9.2 Phone

- Main phone
  - +41 22 799 48 488
  - For general questions and to contact your account manager
- Live trading support (24h)
  - +41 22 799 48 48
  - +41 22 799 48 38
  - Phone brokerage service  
In case of trading emergency situations (e.g. internet connection loss), please call our trading support desk and have your client details ready

### 9.3 E-mail

[support@dukascopy.com](mailto:support@dukascopy.com) - for any questions, requests and instructions related to your live account.

- In case of urgent instructions, we highly recommend that you contact our live client support desk or your Account Manager via phone during business hours (+41 22 799 48 48) so as to verify proper reception of your instructions and to limit risk of late execution or non-execution of the latter.

[info@dukascopy.com](mailto:info@dukascopy.com) - for any other general questions.

- We draw your attention to the risk entailed with communication by emails which include failure in delivery. Additionally, emails sent to addresses other than “support@dukascopy.com” and “info@dukascopy.com” may not be read at all or read with delay. We stress the importance that you verify reception of your instructions by contacting our live client support desk or your Account Manager promptly.

Dukascopy Bank shall not be held liable for any loss or expense, resulting directly or indirectly from late execution or non-execution of instructions sent to any other email address than “support@dukascopy.com”. Depending on their nature, instructions may be executable only during business hours.

## ■ 9.4 Dukascopy Community

Join the [Dukascopy community](#) and communicate with successful traders, find new friends and receive valuable prizes. As a Dukascopy community member, you can register for an extended validity demo account.